

RSR 210N

REUTECH
RADAR SYSTEMS

X-Band Naval Air/Sea Surveillance Radar



- 2D Multi-Mode Naval Radar
- Coherent pulse Doppler processing
- Comprehensive ECCM Suite
- Low mast weight suitable for small vessels
- Integrated into Combat Management System or stand-alone
- Application in Gun Fire Support
- Close range detection and high data update rate for helicopter guidance
- Extensive on-line Built-In Test facilities with integrated diagnostics
- COTS-based software signal and data processor
- Roll & pitch-stabilised antenna platform
- Optional IFF capability

Innovative Solutions...Affordable...Available...

RSR 210N

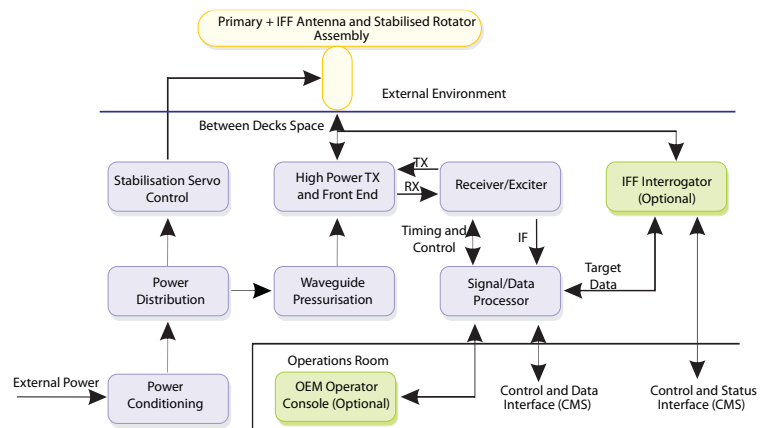
X-Band Naval Air/Sea Surveillance Radar

Performance Specifications

- Radar frequency: X-band (NATO I/J Band)
- Radar Detection Range:
 - Fighter aircraft: > 45 km (5 m² Radar Cross Section)
- Rotation Rate:
 - Air/Sea Surveillance: 15 rpm
 - Self-Defence Anti-Air: 30 rpm
 - Gun Fire Support: 60 rpm
 - Helo Guidance: 60 rpm
- Accuracy (All Modes):
 - Azimuth: < 0.3°
 - Range: < 10 m
- Instrumented Range:
 - Air/Sea Surveillance: 2 - 55 km
 - Self-Defence Anti-Air: 1 - 30 km
 - Gun Fire Support: 1 - 25 km
 - Helo Guidance: 185 m - 10 km
- Elevation Coverage:
 - > 7.5° cosec² to 35°
- Temperature (Operational):
 - Above decks: -30° to +50°C
 - Below decks: +5° to +45°C
- Stabilisation:
 - Roll: ±35°
 - Pitch: ±10°

Sub-system Features

- Antenna/Pedestal:
 - Planar Array Antenna
 - Aperture Dimensions: 2.9 x 0.6 m
 - Stabilisation Accuracy: < 1°
- Transmitter:
 - Type: Air cooled Travelling-Wave Tube Amplifier
 - Bandwidth: > 7%
 - Output Power: 8 kW nominal



- Receiver/Exciter:
 - Multi-channel
 - Pulse Compression
- Signal/Data Processing:
 - Type: Doppler Software Signal Processor
 - Separate air and surface channels
 - Plot Capacity per scan: > 200 each air and sea plots
 - Target Classification: Surface, rotary wing or fixed wing
 - Track Initiation: Manual or automatic

Physical Features

- Mass:
 - Antenna/Pedestal: < 460 kg (excluding IFF)
 - Below Decks: < 1300 kg
- Dimensions:
 - Antenna/Pedestal: 1.8 m height x 1.5 m swept radius
 - Below Decks: 1.8 m x 2.1 m x 0.9 m (h x w x d)

Options

- Console:
 - Control and Plot/Track display independent of Combat Management System
- IFF:
 - Supplied, or as Customer Furnished Item
 - Plot integration with primary or as separate interface
 - Control Interface directly to CMS

